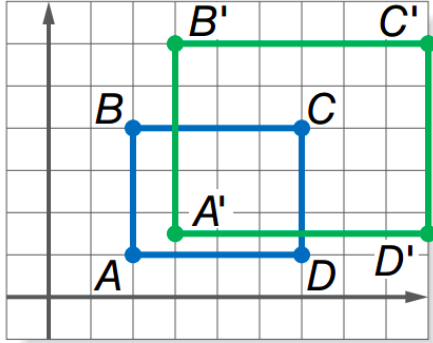


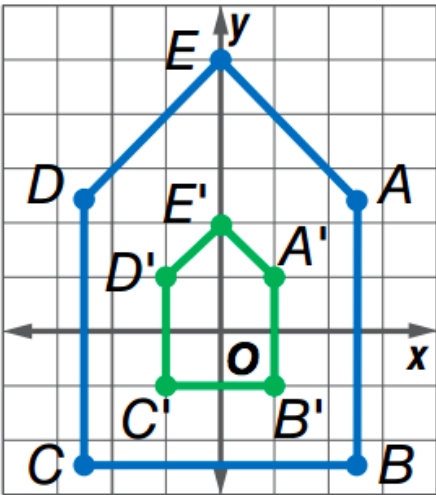
### Midterm Q3 Review

1. Find the scale factor of the dilation.



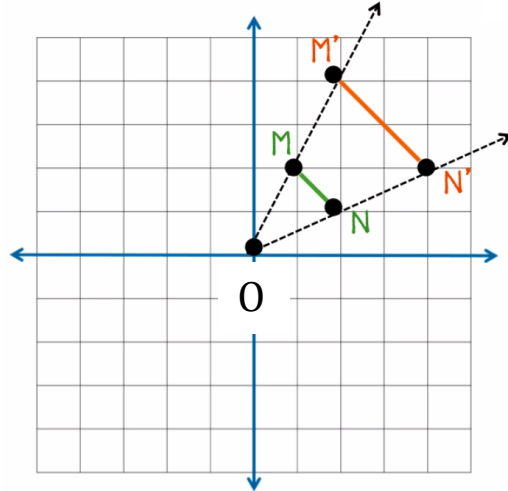
Scale factor: \_\_\_\_\_

3. Find the scale factor of the dilation.



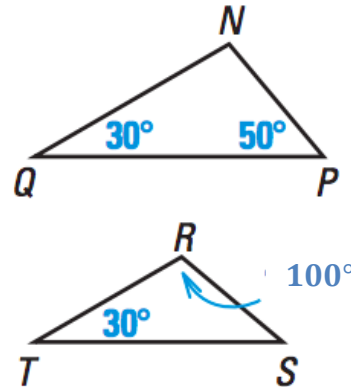
Scale factor: \_\_\_\_\_

2. Compare the lengths of ON and O'N'.



O'N' is \_\_\_\_\_ times the length of ON.

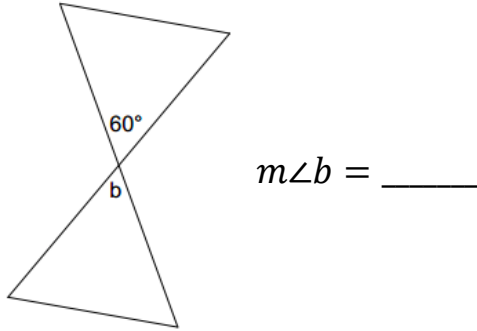
4. Determine if the triangles are similar. If so, write a similarity statement.



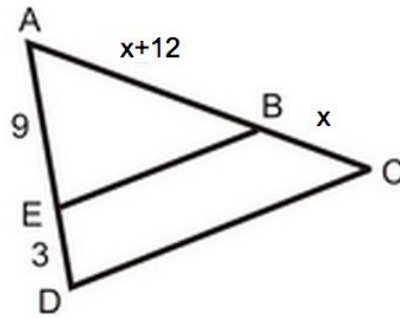
$\Delta$  \_\_\_\_\_  $\sim$   $\Delta$  \_\_\_\_\_

by \_\_\_\_\_.

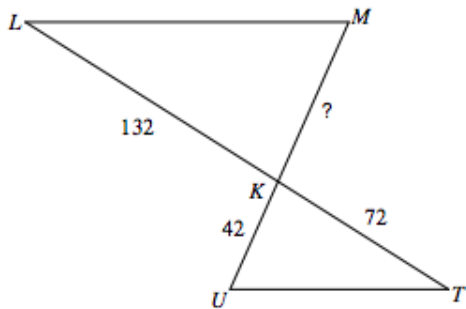
5. What is the measure of  $\angle b$ .



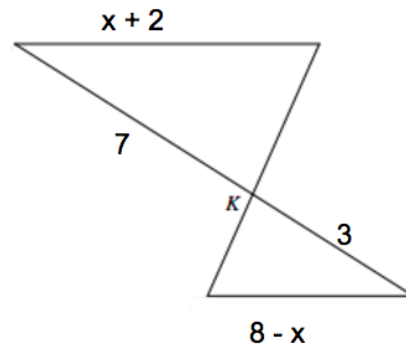
6. Solve for  $x$ .



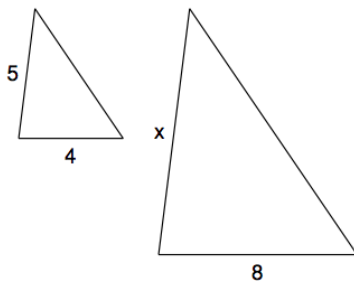
7. Find the distance from point M to point U.



8. Solve for  $x$ .



9. Find the missing side of the similar triangles.



10. Tonya is 4 ft. tall. She stands 7 feet in front of a tree and casts a shadow 2 feet long. How tall is the tree?

